

Annual Reunion and
General Meeting 2016 of the
Swiss LSE Alumni Association

Order-of-Business

		Pre-submitted motions:
1	Report of the Secretary General and Acting Treasurer for 2015	Motion 1
2	External Audit Report for 2015	Motion 2
3	Re-appointment of Jane Royston and Leyla Baghirzade as Events Officers	Motion 3
4	Expulsions from Membership	Motion 4
5	External Audit Reports for 2007, 2008, 2009, 2010, 2011, 2012 and 2013	Motion 5
6	Report of the Acting Treasurer for 2014	Motion 6
7	External Audit Report for 2014	Motion 7

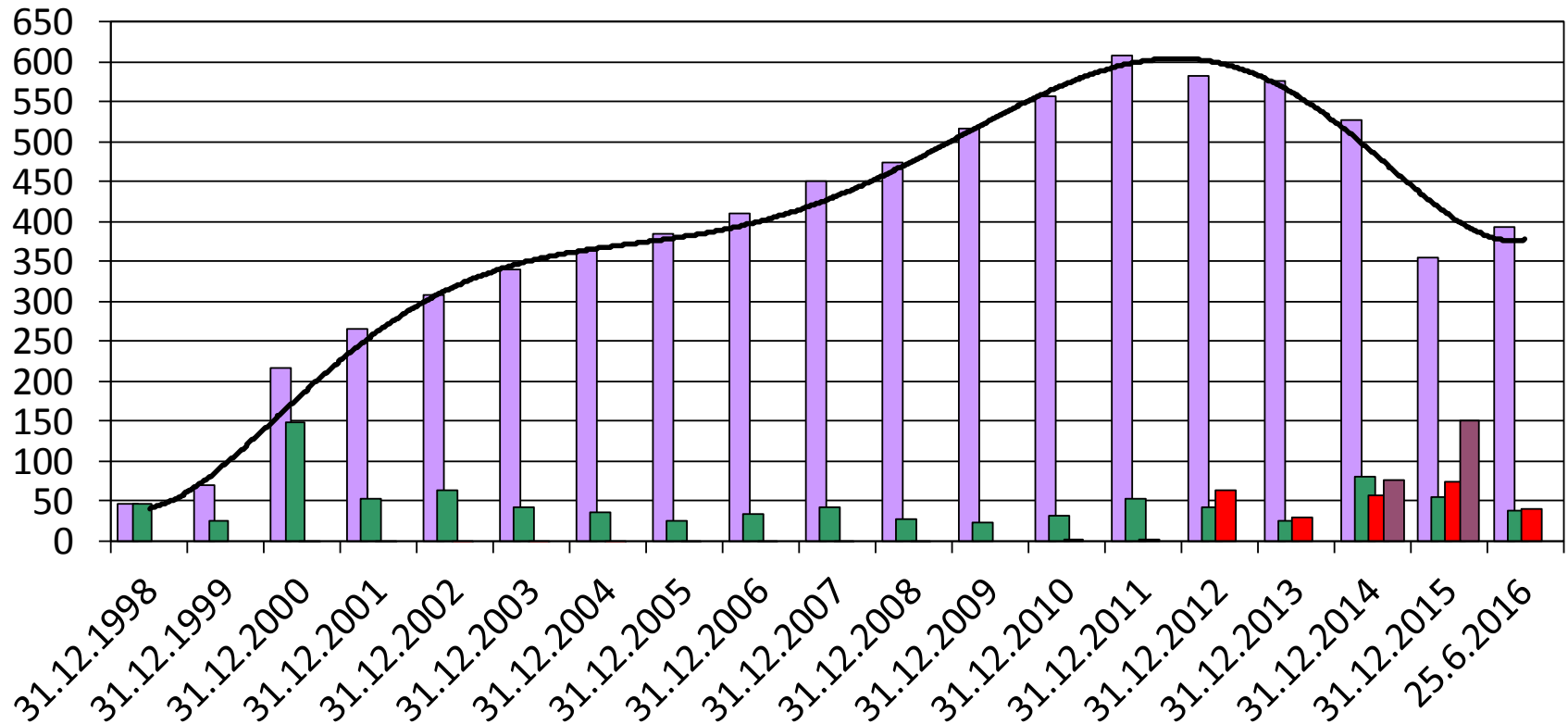
Report of the Secretary General
and Acting Treasurer for 2015
(Order-of-Business Item 1)

External Audit Report for 2015
(Order-of-Business Item 2)

The State of the Association

	2014		2015	
Membership development				
Membership dues	Admin.	Members	Admin.	Members
Cost control	Dues			
Activities & events				
Benefits & services				
Officer recruitment				
Auditor recruitment	External		External	
External relations	Clubland	School	Clubland	School

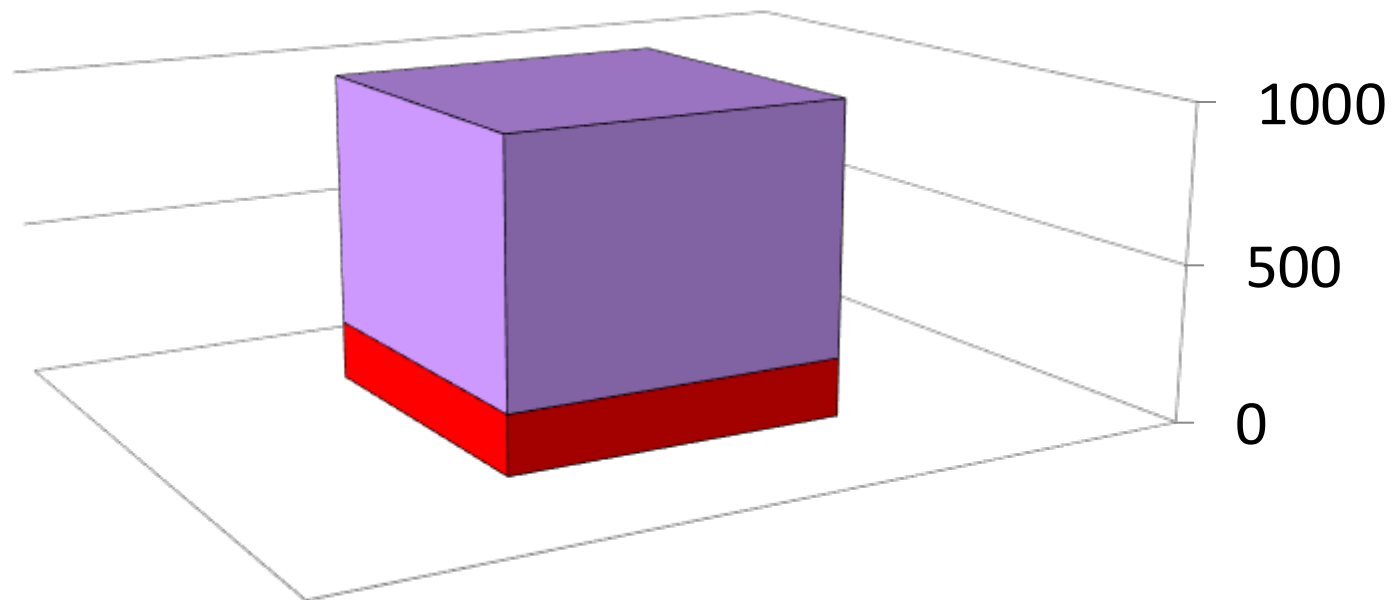
Our Membership



High number of expulsions from membership in 2014 and 2015 because of high dues debts, executing a 2013 ARGGM motion.

Our National Constituency

■ Paper communication ■ Digital communication



Current effective reach:
1'666

Estimated constituency size:
2'500

Events & Activities 2015 (I)

Month / Year	Name:	Organizer(s):	Host(s):	Participation / Sign-ups:
February 2015	Vietnamese Dinners (Geneva and Zurich)	Marcel	Marcel, Lauren Silveira (Member)	20
March 2015	LSE-MIT-ETH Field Trips to the Gotthard Base Tunnel	Marcel	Marcel, Nicole Frick (ETH), Sarah Preiswerk (ETH) and Jonathan Claman (MIT)	96
April 2015	Spring Brunches (Geneva, Zurich)	Marcel	Marcel, Jane Royston (Member)	12
April 2015	Research Seminar with Professor Guy Michaels (Zurich)	UZH	Guy Michaels (LSE)	
April 2015	Research Seminar with Professor Henry Overman (Geneva)	UNIGE	Henry Overman (LSE)	
May 2015	Evening with Professor Dominic Lieven (Geneva)	Marcel	Cynthia and Ivan Schouker (Members)	38
May 2015	UK Election Special (London and Geneva)	SLSEAA Member Benefits Event	BSCC	
May 2015	Networking Event with Nick Beglinger (Zurich)	SLSEAA Member Benefits Event	BSCC	
June 2015	Summer Cocktails at the United Nations (Geneva)	SLSEAA Member Benefits Events	BSCC	

Events & Activities 2015 (II)

Month / Year	Name:	Organizer(s):	Host(s):	Participation / Sign-ups:
June 2015	The London Dragons at the 2015 Races	Marcel	Marcel	21
June 2015	Annual Reunion and General Meeting (Eglisau)	Marcel	Marcel	7
July 2015	At the Tattoo (Basle)	Marcel	Marcel	2
August 2015	Bon voyage, students! Welcome back, new graduates! (Geneva and Zurich)	Marcel	Marcel and Jane	22
November 2015	The Founders' Dinner (Zurich)	Marcel	Marcel	20
November 2015	Business Luncheon with Lord Poltimore (Geneva)	SLSEAA Member Benefits Event	BSCC, ...	
December 2015	12th True Purple (Basle, Berne, Geneva, Lugano, St. Gallen and Zurich)	Marcel	Marcel, Jane, Leyla, Ahmad Sharafat (Alumnus), Nertila Tavanxhi (Member), Severin Bischof (Member), Paul Knott (Member)	176

Events & Activities 2016 (I)

(preview of 2016 report)

Month / Year	Name:	Organizer(s):	Host(s):	Participation / Sign-ups:
January 2016	LSE Europe Forum (Zurich)	LSE	LSE	
February 2016	Networking Event with Peter Voser (Zurich)	SLSEAA Member Benefits Event	BSCC	
February 2016	Ice Skating and Dinner (Geneva and Zurich)	Marcel	Marcel	7
March 2016	Networking Luncheon with Anthony Browne (Geneva)	SLSEAA Member Benefits Event	BSCC	
April 2016	Networking Luncheon with Patrick Odier (Zurich)	SLSEAA Member Benefits Event	BSCC	
April 2016	Landsgemeinde Appenzell Innerrhoden by Special Invitation (Appenzell)	Marcel	Marcel	9
May 2016	Networking Luncheon with Ian Paisley, Jr. (Geneva)	SLSEAA Member Benefits Event	BSCC	
June 2016	The LSE-MIT-ETH Alumnae and Alumni Field Trip to the Opening of the Gotthard Base Tunnel	Marcel	Marcel	156

Events & Activities 2016 (II)

(preview of 2016 report)

Month / Year	Name:	Organizer(s):	Host(s):	Participation / Sign-ups:
June 2016	Annual Reunion and General Meeting (Geneva)	Marcel	Marcel	
July 2016	The London Dragons at the 2016 Races (Zurich)	Marcel	Marcel	
August 2016	Bon voyage, students! Welcome back, new graduates! (Geneva, St. Gallen and Zurich)	Marcel	Marcel, Jane, Leyla, ...	
September 2016	Ethnic Dinner Series	Marcel		
October 2016	Ticino Mixer	Marcel	Marcel, Leyla	
November 2016	The Founders' Dinner (Geneva)	Marcel	Marcel	
December 2016	13 th True Purple (Basle, Berne, Geneva, Lugano, St. Gallen and Zurich)	Marcel	Marcel, Jane, Leyla	

New Benefits & Services in 2015

Number:	Name:	Organizer / negotiator:
No. 26	Collective Insurance Scheme for Buildings	Marcel
No. 25	Collective Insurance Scheme for Personal Liability	Marcel
No. 24	Collective Insurance Scheme for Home Contents	Marcel
No. 23	Collective Insurance Scheme for Road Assistance	Marcel
No. 22	Collective Insurance Scheme for Motorcycles	Marcel
No. 21	Collective Insurance Scheme for Cars	Marcel
No. 20	Career Development Mentoring Programme	Marcel
No. 19	Concurrent individual BSCC membership	Marcel

Please pay your dues on time! Thank you.

We still have members, who have not settled their dues by the date of the General Meeting, **including some who are attending**. Our external auditors have repeatedly commented on the dues receivables.

Annual dues are just CHF 40 and allow the Association to continue to provide LSE alumnae and alumni with **a varied and interesting programme of activities and events** throughout the year in addition to **an attractive range of benefits and services**.

You become a member of the Association. You remain a member of the Association until **you** resign at the end of a calendar year with 6-month advance notice or until **a General Meeting** expels you. (Articles 70 and 72 of the Swiss Civil Code)

As long as you are a member, **you have to pay membership dues**. All members are treated equally and pay the same dues. If your membership has ended through resignation or expulsion, any unpaid dues from **your entire term of membership** must be settled. (Articles 71 and 73 of the Swiss Civil Code, Article 2 of the Articles of Association)

The expenditure on multiple dues reminders is significant. **Other members will not pay your dues for you (i.e. no write-offs).**

2015 Financial Accounts

Account Description	Opening CHF	Debit CHF	Credit CHF	Balance CHF
BALANCE SHEET				
ASSETS				
1000 Cash	315.00	2'600.00	2'600.00	315.00
1010 PostFinance (Dues Account)	13'577.72	26'557.70	32'884.95	7'250.47
1015 PostFinance (Scholarship Endowment)	35'072.05	6.70	35'000.00	78.75
1020 ZKB regular CHF	9'348.20	19'095.92	19'676.25	8'767.87
1035 ZKB voluntary contributions GBP	1.20	1.07	25.22	-22.95
1040 Endowment				
1400 Membership dues receivables	72'077.08	23'280.00	16'660.00	78'697.08
1410 Credit card acquirers receivables				
1420 Other receivables	100.00	280.00	280.00	100.00
1999 Temporary booking account		360.00	360.00	
TOTAL ASSETS	130'491.25	72'181.39	107'486.42	95'186.22
LIABILITIES				
2000 Suppliers payables	-169.40	31'022.65	33'600.55	-2'747.30
2010 Corporate credit card payables				
2020 Secretary General payables	-20'326.05	806.00	5'272.75	-24'792.80
2030 Events Officers payables				
2040 Foundation payables	-35'000.00	35'000.00		
2100 Long-term loans	-29'840.00			-29'840.00
2200 Difficult to recover dues provision	977.00		1'146.00	-169.00
2900 Brought forward profit or loss	-46'132.80			-46'132.80
Profit or loss of the current year		50'590.30	42'094.62	8'495.68
TOTAL LIABILITIES	-130'491.25	117'418.95	82'113.92	-95'186.22

PROFIT/LOSS STATEMENT

EXPENSES

3000	Food and beverages	14'154.90		14'154.90
3005	Events and activities charges	6'593.50		6'593.50
3007	Benefits and services	1'530.00		1'530.00
3008	Membership journal	1'043.05		1'043.05
3010	Web hosting charges	904.35	169.40	734.95
3020	Taxes	224.20		224.20
3050	Insurances			
3070	Fees			
3080	Depreciations and impairments	1'146.00		1'146.00
3090	Office supplies	881.30		881.30
3100	Telephone			
3110	Postal fees	5'223.50		5'223.50
3130	Printing and publicity	6'161.75		6'161.75

Account Description	Opening CHF	Debit CHF	Credit CHF	Balance CHF
3140 Negative bank interests		0.50		0.50
3150 Bank and current account fees		353.52		353.52
3151 Credit card acquirer commissions		375.23		375.23
3152 Payment service provider fees		518.40		518.40
3160 Financial audit		7'561.60		7'561.60
3170 Travel		2'733.60		2'733.60
3180 Software				
3400 Donations		220.00		220.00
3901 Intellectual property				
3999 Other expenses		281.90		281.90
TOTAL EXPENSES		49'907.30	169.40	49'737.90
REVENUE				
4000 Membership dues		280.00	23'200.00	-22'920.00
4010 Events and activities ticket sales		403.00	17'302.55	-16'899.55
4140 Positive bank interests			6.70	-6.70
4200 Various sales			21.20	-21.20
4500 Donations			1'393.70	-1'393.70
4600 Exchange rate differences			1.07	-1.07
TOTAL REVENUE		683.00	41'925.22	-41'242.22
Profit(-) Loss(+) from Profit & Loss Statement		50'590.30	42'094.62	8'495.68

Motion 1

"Members are motioned to approve the Report of the Secretary General and Acting Treasurer on the State of the Association and on the Financial Accounts 2015"

External Audit Report and Statement

Report of the Statutory Auditor to the General Meeting on the limited audit of the Swiss LSE Alumni Association, Berne

We have examined the financial statements (balance sheet, income statement and notes) of the Swiss LSE Alumni Association for the financial year ending on 31 December 2015.

The Officers are responsible for the financial statements, while our task is to examine the financial statements. We confirm that we meet the legal requirements concerning professional qualification and independence.

Our audit was conducted according to the Swiss Standard on the Limited Audit. Based thereon, an audit must be planned and executed so that material misstatements in the financial statements are recognized. A limited audit comprises mainly interviews and analytical audit procedures as well as detailed examinations of the documentation held by the audited organizational unit. By contrast, audits of the operational processes and the internal control system and inquiries and additional audit procedures to detect tortious acts or other breaches of the law are not part of this audit.

In our audit, we have not encountered any facts from which we would have to conclude that the financial statements do not correspond to the law and the statutes.

Without qualifying our audit statement, we draw attention to the "Notes on the Receivables" in the annex to the financial statements, in which a material uncertainty about the valuation of receivables is set out. Objectively these cannot be assessed conclusively at the present time.

If a value adjustment should be necessary for the receivables, an illiquidity of the association could occur, and the respective provisions pursuant to Art. 77 SCC must be followed.

Motion 2

"Members are motioned to grant discharge (décharge) to Marcel Bigger, the Line Officer responsible for the Financial Accounts 2015, pursuant, in regard to scope, to Article 758, Section 1, of the Swiss Code of Obligations."

Re-appointment of Jane Royston
and Leyla Baghirzade as Events
Officers
(Order-of-Business Item 3)

Motion 3

"Members are motioned to re-appoint

Jane Royston (incumbent) as Events Officer for the regular term-of-office 2016 to 2018

Leyla Baghirzade (incumbent) as Events Officer for the regular term-of-office 2016 to 2018

pursuant to Article 3 of the Articles of Association."

Expulsions from Membership (Order-of-Business Item 4)

Motion 4 (I)

"Members are motioned

to expel the members as listed below from the membership of the Association with effect 26 June 2016 based on Article 2, Section 5, of the Articles of Association, the SLSEAA Expulsion Policy adopted by the General Meeting on 30 June 2013 and Article 72 of the Swiss Civil Code, and

to instruct the Officers to recover any unpaid dues based in the SLSEAA Expulsion Policy of 30 June 2013 and Article 73.2 of the Swiss Civil Code"

Motion 4 (II)

Member Number:	Name:	Dues Balance:
507	Rocchino Contangelo	CHF 360
601	Alexander Mazurek	CHF 260
597	Ekaterina Pavlova	CHF 260
583	Daniel Fountain	CHF 260
584	Viviana Munoz Tellez	CHF 260
541	Valeriya Kroshyna	CHF 280
495	Sarah des Rosiers	CHF 260
573	Carlo Tommasini Mattiucci	CHF 280
321	Juan Carlos Gil Crespo	CHF 400

External Audit Reports for 2007,
2008, 2009, 2010, 2011, 2012
and 2013
(Order-of-Business Item 5)

External Audit Reports and Statements

Reports on the Review

According to commission, we have reviewed the financial statements (balance sheet, income statement and notes) of the Swiss LSE Alumni Association, Bern, covering the period from 1 January 2007/2008/2009/2010/2011/2012/2013 to 31 December 2007/2008/2009/2010/2011/2012/2013.

The Treasurer and the Secretary General (member administration) are responsible for the financial statements, while our task is to issue a report about the financial accounts based on our review.

Our review was conducted according the Swiss Audit Standard 910. Based thereon, a review must be planned and executed so that material misstatements in the financial statements are recognized though not with the same certainty as with an exam. A review is limited mainly to interviews of the Officers of the Association and analytical audit procedures with respect to the underlying data of the financial statements. We have made a review not an exam and, hence, do not issue an audit certification.

Our interviews have shown a substantial risk that the receivables from membership dues cannot be collected. As a result, the receivables from membership dues are overvalued; accordingly the financial result as reported is too favorable. Should the receivables not be recovered in full or by the majority, there is a danger of an overindebtedness of the Association.

Based on our review, we have, with the exception set forth in the preceding paragraph, not encountered any facts from which we had to conclude that the financial statements are not correct and complete.

Motion 5

"Members are motioned to grant discharge (décharge) to Marcel Bigger, the former Line Officer responsible for the Membership Dues Administration during the financial years 2007 to 2013 pursuant, in regard to scope, to Article 758, Section 1, of the Swiss Code of Obligations."

"Members are motioned to grant discharge (décharge) to Martin Last, the former Line Officer responsible for the Financial Accounts 2007 to 2012 pursuant, in regard to scope, to Article 758, Section 1, of the Swiss Code of Obligations."

"Members are motioned to grant discharge (décharge) to Marcel Bigger, the former Line Officer temporarily responsible for the Financial Accounts 2013 pursuant, in regard to scope, to Article 758, Section 1, of the Swiss Code of Obligations."

Report of the Acting Treasurer
for 2014

(Order-of-Business Item 6)

External Audit Report for 2014

(Order-of-Business Item 7)

2014 Financial Accounts

Account Description	Opening CHF	Debit CHF	Credit CHF	Balance CHF
BALANCE SHEET				
ASSETS				
1000 Cash	315.00			315.00
1010 PostFinance (Dues Account)	33'213.51	24'929.46	44'565.25	13'577.72
1015 PostFinance (Scholarship Endowment)		35'072.05		35'072.05
1020 ZKB regular CHF	1'725.61	7'829.94	207.35	9'348.20
1025 ZKB prepaid CHF	-139.00	163.20	24.20	
1030 ZKB voluntary contributions CHF	4'127.90		4'127.90	
1035 ZKB voluntary contributions GBP	1.15	0.05		1.20
1040 Endowment				
1400 Membership dues receivables	104'736.54	26'320.00	58'979.46	72'077.08
1410 Credit card acquirers receivables				
1420 Other receivables	100.00			100.00
TOTAL ASSETS	144'080.71	94'314.70	107'904.16	130'491.25
LIABILITIES				
2000 Suppliers payables		4'665.06	4'834.46	-169.40
2010 Corporate credit card payables				
2020 Secretary General payables	-16'445.90		3'880.15	-20'326.05
2030 Events Officers payables				
2040 Foundation payables			35'000.00	-35'000.00
2100 Long-term loans	-29'840.00			-29'840.00
2200 Difficult to recover dues provision	-19'566.00	32'057.00	11'514.00	977.00
2900 Brought forward profit or loss	-78'228.81			-78'228.81
Profit or loss of the current year		62'224.36	30'128.35	32'096.01
TOTAL LIABILITIES	-144'080.71	98'946.42	85'356.96	-130'491.25

PROFIT/LOSS STATEMENT

EXPENSES

3000	Food and beverages	5'219.50		5'219.50
3010	Web hosting charges	814.20		814.20
3020	Taxes			
3050	Insurances			
3070	Fees			
3080	Depreciations and impairments	11'514.00		11'514.00
3090	Office supplies	32.20		32.20
3100	Telephone	65.00		65.00
3110	Postal fees	4'199.51	10.01	4'189.50
3130	Printing and publicity	961.90		961.90
3140	Negative bank interests	0.20		0.20
3150	Bank and current account fees	162.10		162.10

Account Description	Opening CHF	Debit CHF	Credit CHF	Balance CHF
3151 Credit card acquirer commissions				
3152 Payment service provider fees				
3170 Travel				
3180 Software		78.50		78.50
3400 Donations		36'420.00		36'420.00
3901 Intellectual property		1'300.00		1'300.00
3999 Other expenses		897.25		897.25
TOTAL EXPENSES		61'664.36	10.01	61'654.35
REVENUE				
4000 Membership dues		560.00	26'320.00	-25'760.00
4010 Events and activities charges			3'416.19	-3'416.19
4140 Positive bank interests			79.05	-79.05
4200 Various sales				
4500 Donations			303.05	-303.05
4600 Exchange rate differences			0.05	-0.05
TOTAL REVENUE		560.00	30'118.34	-29'558.34
Profit(-) Loss(+) from Profit & Loss Statement		62'224.36	30'128.35	32'096.01

Motion 6

"Members are motioned to approve the Report of the Acting Treasurer on the Financial Accounts 2014"

External Audit Report and Statement

Report on the Review

According to commission, we have reviewed the financial statements (balance sheet, income statement and notes) of the Swiss LSE Alumni Association, Bern, covering the period from 1 January 2014 to 31 December 2014.

The Treasurer and the Secretary General (member administration) are responsible for the financial statements, while our task is to issue a report about the financial accounts based on our review.

Our review was conducted according the Swiss Audit Standard 910. Based thereon, a review must be planned and executed so that material misstatements in the financial statements are recognized though not with the same certainty as with an exam. A review is limited mainly to interviews of the Officers of the Association and analytical audit procedures with respect to the underlying data of the financial statements. We have made a review not an exam and, hence, do not issue an audit certification.

Our interviews have shown a substantial risk that the receivables from membership dues cannot be collected. As a result, the receivables from membership dues are overvalued; accordingly the financial result as reported is too favorable. Should the receivables not be recovered in full or by the majority, there is a danger of an overindebtedness of the Association.

Based on our review, we have, with the exception set forth in the preceding paragraph, not encountered any facts from which we had to conclude that the financial statements are not correct and complete.

Motion 7

"Members are motioned to grant discharge (décharge) to Marcel Bigger, the Line Officer responsible for the Membership Dues Administration in the financial year 2014, pursuant, in regard to scope, to Article 758, Section 1, of the Swiss Code of Obligations."

"Members are motioned to grant discharge (décharge) to Alex Radzyner, the Line Officer responsible for the Financial Accounts 2014, pursuant, in regard to scope, to Article 758, Section 1, of the Swiss Code of Obligations."